

 Panasonic TOYOTA
Racing



**STEP
RIGHT
UP!**

THE 2009 F1 COLLECTION

TEAM LINE

GREAT CURVES!

YES, THE 2009 TEAM LINE IS A BEAUTY. WE JOINED FORCES WITH OUR NEW PARTNER CHIEMSEE TO MAKE IT SO GOOD LOOKING. CHECK IT OUT!



LOCATION: TEST BENCH AT THE TOYOTA F1 FACTORY IN COLOGNE/GERMANY



Stowable hood

Team member label

3-LAYER
HIGH PERFORMANCE
FABRIC!

Sweat vapour
Rain
Inner fabric
Kevlar membrane
Outer fabric

Available sizes:

S:	AM620-02
M:	AM620-03
L:	AM620-04
XL:	AM620-05
XXL:	AM620-06

Produced by

Team member label

Brush stroke flag label

Sponsor logos fully embroidered

Available sizes:

S:	AM620-07
M:	AM620-08
L:	AM620-09
XL:	AM620-10
XXL:	AM620-11



Team member label

Brush stroke flag label

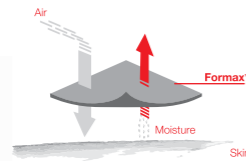


TEAM TEC SHIRT 'PERFORMANCE'

Original TF1 team clothing, styled for comfort in technical breathable fabric
 Sponsor logos printed
 Hidden breast pocket with printed brush stroke
 Fabric: 100 % polyester Formax™ for optimum moisture control

Available sizes:

- S: AM620-12
- M: AM620-13
- L: AM620-14
- XL: AM620-15
- XXL: AM620-16



Technical Formax™ fabric



Hidden breast pocket

Team Cap TF1, page 10



ALSO FOR KIDS!

Helmet TF1 'Professional' for kids, page 33



TEAM T-SHIRT 'CLASSIC' FOR KIDS

In the style of the official team clothing
 Sponsor logos printed
 Fabric: 100 % cotton

Available sizes:

- 110/116: AM620-22
- 134/140: AM620-23



Team member label



Brush stroke flag label

Panasonic Toyota Racing loop label

TEAM T-SHIRT 'CLASSIC' FOR MEN

In the style of the official team clothing
 Sponsor logos printed
 Fabric: 100 % cotton

Available sizes:

- S: AM620-17
- M: AM620-18
- L: AM620-19
- XL: AM620-20
- XXL: AM620-21





Team member label

Brush stroke
flag labelPanasonic Toyota
Racing loop label

Produced by



Breathable

2-LAYER
HIGH PERFORMANCE
FABRIC!

TEAM SWEAT JACKET 'PERFORMANCE'

Original TF1 team clothing, engineered for function
 Technical 2-layer fabric: breathable interlock outside,
 heat-insulating bonded fleece inside
 Sponsor logos fully embroidered
 Toyota branded zipper puller
 Fabric: 100 % polyester

Available sizes:

S: AM620-24
 M: AM620-25
 L: AM620-26
 XL: AM620-27
 XXL: AM620-28



Sponsor logos fully embroidered

Sponsor logos
embroidered

Sandwich peak



Printed brush stroke



TEAM CAP TF1

Original Toyota F1 team clothing - Authentic headgear
 Sponsor logos fully embroidered, Panasonic Toyota Racing logo embroidered on the front
 Cotton lining with TF1 logo printed seam tape
 One size (58 cm), adjustable by a metal clip with printed brush stroke
 Outer fabric: 100 % polyester, dirt resistant

Available colours:

Red: AM620-29
 White: AM620-30



Sponsor logos embroidered

Brush stroke flag label

Sandwich peak

TEAM CAP TF1

Original Toyota F1 team clothing - Authentic headgear
 Sponsor logos fully embroidered, Panasonic Toyota Racing logo embroidered on the front
 Cotton lining with TF1 logo printed seam tape
 One size (58cm), adjustable by a metal clip with printed brush stroke
 Outer fabric: 100 % polyester, dirt resistant

Available colours:

- Red: AM620-29
- White: AM620-30



Printed brush stroke



ALSO FOR KIDS!

TEAM CAP TF1 FOR KIDS

Original Toyota F1 team clothing design
 Sponsor logos fully embroidered, Panasonic Toyota Racing logo embroidered on the front
 Cotton lining with TF1 logo printed seam tape
 One size (53 cm), adjustable by a metal clip with printed brush stroke
 Outer fabric: 100 % polyester, dirt resistant

- Red: AM620-31



Signature embroidered



Sandwich peak with woven ensign



Start number appliqué

DRIVER CAP

Signature and Panasonic Toyota Racing logo embroidered
 Start number appliqué on back
 Sandwich peak with woven ensign, cotton lining with TF1 logo printed seam tape
 One size (58 cm), adjustable by a metal clip with printed brush stroke
 Outer fabric: 100 % polyester, dirt resistant

- Timo Glock: AM620-32
- Jarno Trulli: AM620-33



Signature embroidered



Sandwich peak with woven ensign



Start number appliqué

SPORTS LINE

TRY THIS AT HOME!

WORKING? PLAYING? RELAXING? LIFE IS DEMANDING, SO YOU NEED TO BE TOO. WHATEVER YOU DO, THE NEW SPORTS LINE PRODUCTS LET YOU DO IT TO THE MAX!

LOCATION: MAIN WORKSHOP AT THE TOYOTA F1 FACTORY IN COLOGNE/GERMANY



Produced by 


Water repellent



Pocket with red inner lining



OUTDOOR JACKET 'AERODYNAMIC'

Styled for passion: aerodynamic design, insert inspired by air scoop, curved sleeve hems
3-D stylised F1 rear lights on hood and zipper puller
Ventilation system at the back, various inner and outer pockets
Panasonic Toyota Racing logo subtly branded on the sleeve and printed on mesh lining inside
Metal badge with embossed TF1 car silhouette
3-D Chiemsee logo printed inside
Outer fabric: 100 % nylon doobby with water repellent coating

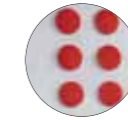
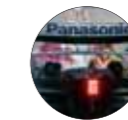
Available sizes:

- S: AM620-34
- M: AM620-35
- L: AM620-36
- XL: AM620-37
- XXL: AM620-38



Ventilation system

Produced by 

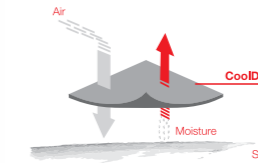


LONGSLEEVE 'AERODYNAMIC'

Sporty rugby style shirt in aerodynamic design: inserts inspired by TF1 air scoop, curved sleeve hems
3-D stylised F1 rear lights on the back
Breast pocket in contrasting colour
Panasonic Toyota Racing logo printed on the sleeve
Metal badge with embossed TF1 car silhouette
3-D Chiemsee logo printed inside
Fabric: 100 % cotton

Available sizes:

- S: AM620-39
- M: AM620-40
- L: AM620-41
- XL: AM620-42
- XXL: AM620-43



TEC-SHIRT 'ACTIVE'

Cool V-neck shirt with dynamic raglan sleeves
Technical CoolDry™ fabric for optimum moisture control and breathability
3-D stylised F1 rear lights on the back
Mesh inserts in contrast colour, inspired by TF1 aero louvres
Panasonic Toyota Racing logo printed on the back
Metal badge with embossed TF1 car silhouette
Fabric: 100 % polyester CoolDry™

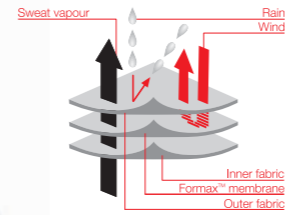
Available sizes:

- S: AM620-49
- M: AM620-50
- L: AM620-51
- XL: AM620-52
- XXL: AM620-53

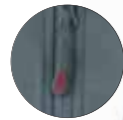




**WINDPROOF
WATER REPELLENT
BREATHABLE!**



Pocket with red inner lining



Produced by

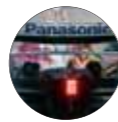
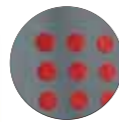


SOFTSHELL JACKET 'AERODYNAMIC'

Fashion meets function: windproof and water repellent with a breathable membrane system
 Stretchy micro fleece on the inside
 Aerodynamic design, inserts inspired by TF1 air scoop, curved sleeve hems
 Fitted cut
 3-D stylised F1 rear lights on hood and zipper puller
 Panasonic Toyota Racing logo subtly embossed on the sleeve
 Metal badge with embossed TF1 car silhouette
 3-D Chiemsee logo printed inside
 Fabric: 100 % polyester Formax™

Available sizes:

- S: AM620-44
- M: AM620-45
- L: AM620-46
- XL: AM620-47
- XXL: AM620-48





LONGSLEEVE LADIES 'ACTIVE'

Cool V-neck shirt with dynamic raglan sleeves
 Mesh inserts in a contrasting colour,
 inspired by TF1 aero louvres
 Fitted cut
 3-D stylised F1 rear lights on the back
 Panasonic Toyota Racing logo printed on the sleeve
 Metal badge with embossed TF1 car silhouette
 Fabric: 95 % cotton / 5 % elasthane


Available sizes:

- XS: AM620-71
- S: AM620-72
- M: AM620-73
- L: AM620-74
- XL: AM620-75



**WINDPROOF
 WATER REPELLENT
 BREATHABLE!**



Produced by 

SOFTSHELL JACKET LADIES 'AERODYNAMIC'

Fashion meets function: windproof and water repellent with
 a breathable membrane system
 Stretchy micro fleece on the inside
 Aerodynamic design: insert inspired by TF1 air scoop, curved sleeve hems
 Fitted cut
 3-D stylised F1 rear lights on hood and zipper puller
 Panasonic Toyota Racing logo subtly embossed on the sleeve
 Metal badge with embossed TF1 car silhouette
 3-D Chiemsee logo printed inside
 Fabric: 100 % polyester Formax™

Available sizes:

- XS: AM620-66
- S: AM620-67
- M: AM620-68
- L: AM620-69
- XL: AM620-70





T-SHIRT LADIES 'ASIAN STYLE'

Stylish Asian design cherry blossom print on front
 Left side seam gathered with bands
 Trendy sleeve cut
 Fitted cut
 Silver grey Panasonic Toyota Racing logo printed subtly on the back
 Shoulder seam in a contrasting colour
 Metal badge with embossed TF1 car silhouette
 Fabric: 91% cotton / 9 % elasthane

Available sizes:

- XS: AM620-76
- S: AM620-77
- M: AM620-78
- L: AM620-79
- XL: AM620-80

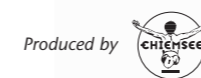


T-SHIRT TF1 'RACING' FOR MEN

Round neck shirt with technical TF1 car drawing printed on the front
 3-D stylised F1 rear lights on the back
 Panasonic Toyota Racing logo printed on sleeve
 Woven Panasonic Toyota Racing loop label on front hem
 Brush stroke flag label on side seam
 3-D Chiemsee logo printed inside
 Fabric: 100 % cotton

Available sizes:

- S: AM620-54
- M: AM620-55
- L: AM620-56
- XL: AM620-57
- XXL: AM620-58



ALSO FOR KIDS!

Panasonic Toyota Racing loop label

Brush stroke flag label

T-SHIRT TF1 'RACING' FOR KIDS

Round neck shirt with technical TF1 car drawing printed on the front
 3-D stylised F1 rear lights on the back
 Panasonic Toyota Racing logo printed on sleeve
 Woven Panasonic Toyota Racing loop label on front hem
 Brush stroke flag label on side seam
 3-D Chiemsee logo printed inside
 Fabric: 100 % cotton

Available sizes:

- 110/116: AM620-59
- 134/140: AM620-60





Brush stroke flag label

SWIM SHORTS TF1

For all beach and water sports: triple secured by elastic waistband on the back, front closure with snap buttons, velcro and drawstring
Soft touch microfibre finish
2 side pockets and 1 zipper pocket on the back
Contrast inserts on both sides
Panasonic Toyota Racing logo embroidered on the side
3-D Chiemsee logo printed inside
Fabric: 100 % polyester with mesh lining

Available sizes:

S:	AM620-61
M:	AM620-62
L:	AM620-63
XL:	AM620-64
XXL:	AM620-65



SANDALS TF1

Unisex, lightweight, with textile straps, contrast colour stitching and embossed Panasonic Toyota Racing logo
Comfortable soft sole with contrasting stripes
Fabric: 100 % EVA foam

Available sizes:

36/37:	AM620-99	UK	4
38/39:	AM621-00	UK	5 1/2
40/41:	AM621-01	UK	7
42/43:	AM621-02	UK	8 1/2
44/45:	AM621-03	UK	10



Woven TF1 car

TOWEL WITH WOVEN TF1 CAR

Heavy duty towel, washable at 60°C
Panasonic Toyota Racing logo printed, Toyota F1 car woven
Size: 140 x 70 cm
Fabric: 100 % cotton

AMS82-57

TRAVEL LIKE THE TEAM!



- Unique design pattern inspired by TF1 front wing shape
- Trendy material mix combining different textures: technical, hard-wearing carbon design bottom with front wing shaped button closing system, and stylish 420 D polyester
- Metal carabiner and combined metal/rubber zipper pullers
- Lining made from heavy duty 150 D rip-stop nylon

SPORTSBAG TF1 'PROFESSIONAL'

Spacious main compartment with interlocking zippers, detachable partition secured by velcro
8 pockets, with mesh pockets on both sides, secret compartment behind carbon design flap
Adjustable padded shoulder strap
3-D Panasonic Toyota Racing logo printed on front and back
Width: 70 cm, height: 38 cm

AM620-83



TROLLEY TF1 'PROFESSIONAL'

3 large zippered compartments: spacious main compartment with packing straps for clothing, laptop pocket for a 17-inch screen laptop, dedicated file compartment with dividers
Interlocking zippers for added security
Secret compartment behind carbon design flap
Smooth running, low-noise tyres
Two-stage adjustable, integrated telescopic handle
3-D Panasonic Toyota Racing logo printed on the front
Width: 52 cm, height: 40 cm, depth: 26 cm, meets most airline standards for carry-on luggage

AM620-87

CARRY-ON LUGGAGE STANDARD!



BACKPACK TF1 'PROFESSIONAL'

Large main compartment with laptop pocket and covered zipper for additional rain protection
 5 additional zipper pockets, with mesh pockets on both sides for all your belongings, secret compartment behind carbon design flap
 Padded shoulder straps with chest and waist belt, padded back
 Additional front straps to fix sports equipment
 3-D Panasonic Toyota Racing logo printed on the front
 Width: 38 cm, height: 45 cm

AM620-86



Produced by 

WASHBAG TF1

With hanger function
 Spacious main compartment with mirror, 6 additional zipper pockets to store all kind of cosmetics
 3-D Panasonic Toyota Racing logo printed inside and outside
 Width: 28 cm, height: 24 cm

AM620-88



SHOULDER BAG TF1 'PROFESSIONAL'

2 main compartments, organizer section
 6 additional zipper pockets, secret compartment behind carbon design flap
 3-D Panasonic Toyota Racing logo printed on the front
 Width: 45 cm, height: 33 cm

AM620-84



E-BAG TF1

Protective hard shell for digital camera, MP3 player, mobile phones or similar electronic devices
 Transparent zipper pocket for additional protection
 Belt loop secured by velcro
 3-D Panasonic Toyota Racing logo printed on front and back
 Width: 9 cm, height: 13 cm
 Fabric: foamed PVC

AM620-90



PROTECTIVE HARD SHELL!



E-bag without digital camera

WALLET TF1

Various pockets for credit cards, coins and banknotes
 2 additional inner zipper pockets
 3-D Panasonic Toyota Racing logo printed on the front
 Width: 12 cm, height: 10 cm
 Fabric: 100 % polyester

AM620-89





USB STICK TF1

More than a toy: Toyota F1 car shaped USB stick
 USB 1.1 and 2.0 compatible
 256 MB storage capacity or 2 GB storage capacity
 F1 metal box with carrying strap, USB cable and installation CD-ROM

256 MB	AM601-15
2 GB	AM611-49



COFFEE MUG TF1 'RACING'

Get your day off to a good start!
 Inside print: Panasonic Toyota Racing logo
 Outside print: technical TF1 car drawing
 Capacity: 0,3 l
 Base: porcelain, dishwasher and microwave safe

AM620-91



Textile surface

Wood

FAN 'ASIAN STYLE'

For a fresh breeze!
 Wooden fan with textile surface
 Asian style print
 Panasonic Toyota Racing logo printed on the handle
 Radius: 23 cm

AM610-48

EAR PLUGS TF1

Two soft red plugs, stored in an exclusively designed TF1 box with loop
 Brush stroke and Panasonic Toyota Racing logo printed

AM601-17



Hearing protection: 33 dB



MONOCOQUE SAFETY SYSTEM!

HELMET TF1 'PROFESSIONAL'

Protective IN-MOLD technology guarantees extremely robust helmet composition while being super light
 Integrated monocoque framework distributes impact equally to the entire helmet structure
 Product safety tested according to European standard CE EN 1078
 UV-resistant, extra break-proof and scratch-resistant CERAMIC outer shell
 Inner shell made from shock absorbing HI-EPS
 Fully head size adjustable with a simple single-handed turning knob
 Single-handed ERGOMATIC safety belt buckle
 Airflow vents provide extra breathability and wearing comfort, additional insect protection with net inserts on the front

Available sizes:

M/53-57 cm:	AM620-96
L/58-63 cm:	AM620-97



Sports bottle top

Car silhouette printed



SPORTS BOTTLE TF1

Quench your thirst at any time – It's simple with the SIGG aluminium drinking bottle
 Capacity 0,75 l
 Inclusive sports bottle top, leak proof even with carbonated drinks, inner coating resistant to fruit acid and isotonic drinks
 Toyota F1 car silhouette and Panasonic Toyota Racing logo printed

AM620-93



KEY RING 'AERO LOUVRE'

Carabiner key ring with stylised F1 aero louvres on one side
 Panasonic Toyota Racing logo embossed on the other side
 Base: zinc die-casting, synthetic matt finish

AM610-58





LANYARD WITH TF1 METAL BUCKLE

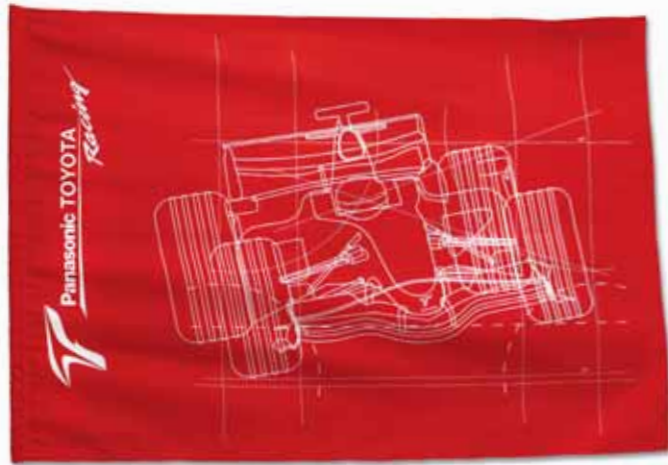
Removable clasp with metal carabiner and ring
 Special metal clip with embossed Toyota F1 logo
 Soft double layer strap printed with Panasonic Toyota Racing logo and silicone brush stroke patch
 Strap length: 80 cm

AM610-49

TICKET HOLDER WITH TF1 METAL BUCKLE

Transparent, removable PVC ticket holder with stylised F1 aero louvres
 For tickets 21 x 11 cm
 Special metal clip with embossed Toyota F1 logo
 Soft double layer strap printed with Panasonic Toyota Racing logo and silicone brush stroke patch
 Strap length: 80 cm

AM610-50



FLAG TF1 'RACING'

Cheer with us!
 Panasonic Toyota Racing logo and technical TF1 car drawing printed
 Fabric: 100 % polyester
 140 x 100 cm

AM621-05

FLAG TF1 SMALL

Handy flag, size 45 x 30 cm
 Panasonic Toyota Racing logo and brush stroke printed
 Fabric: 100 % polyester
 With pole, length 60 cm

AM601-08



BABY BODY TF1

Unisex short sleeve body
 Easy dressing with flexible neck opening and press button fastenings
 Washable at 60° C
 Panasonic Toyota Racing logo and TF1 printed kids graphics
 Oeko - Tex standard 100 certified, tested for harmful substances in accordance with EU norms for baby items
 Fabric: 100 % cotton

Available sizes:

68/74: AM621-22

80/86: AM621-23



BABY SHOES TF1

Soft and warming velours shoes with TF1 embroidered kids graphics
 Antislip sole
 Panasonic Toyota Racing logo printed
 Cuff fabric: 65 % cotton / 35 % polyester
 Outer fabric and lining: 100 % polyester

AM621-10

BABY BIB TF1

Easy dressing with velcro neck fastening
 Super soft 2-ply terry cloth
 Embroidered TF1 kids graphic
 Washable at 60° C
 Oeko - Tex standard 100 certified, tested for harmful substances in accordance with EU norms for baby items
 Fabric: 65 % cotton / 35 % polyester

AM621-11



SIGG

KIDS' BOTTLE TF1

High quality aluminium drinking bottle with comfortable, ergonomic bottle handle for kids
 Capacity 0,3 l
 Inclusive kids' bottle top, leak proof even with carbonated drinks
 Inner coating resistant to fruit acid
 Panasonic Toyota Racing logo and TF1 printed kids graphics

AM620-94



**EXTRA
LARGE & SOFT!**

FLEECE BLANKET TF1

Soft and warming, with TF1 car silhouette and Panasonic Toyota Racing logo embossed
Panasonic Toyota Racing loop label
Seamed edges with hand-sewn effect stitching
Extra large size: 200 cm x 130 cm, with carrying strap to roll up
Fabric: 100 % polyester with anti pilling finish

AM620-92



Panasonic Toyota Racing loop label

STUNT KITE 'PERFORMANCE'

Engineered for sporty flying
Made from heavy duty polyester, with fibreglass linkage and 2 steering rollers, suitable for wind speed of 2-5 bft
Dimensions: 180 x 74 cm
Rope length: 30 meters

AM621-08



**X-LARGE
DIMENSIONS!**

UMBRELLA TF1 'RACING'

High tech weather protection: automatic umbrella with windproof system
Silver coating inside with sun protection factor 50+
Lightweight aluminium shaft
Ergonomic handle with laser engraved Panasonic Toyota Racing logo
Panasonic Toyota Racing logo printed on two panels
Technical TF1 car drawing printed
Length: 94 cm, diameter: 140 cm

AM621-07

**LIGHTWEIGHT WITH
WINDPROOF SYSTEM!**



Silver coating with sun protection

Including nylon cover and carrying strap



SUN SHELL TF1

Sun protecting shell with fibreglass linkage and 6 tent pegs for bottom fixation
Panasonic Toyota Racing logo and brush stroke printed
Extra large, size built-on: 206 x 110 x 106 cm
Packed size: 68 cm x 13 cm, incl. nylon cover and carrying strap
Fabric: 100 % polyester 190T, hard-wearing PE base

AM621-14





T-Shirt TF1 'Racing' for kids, page 21

KIDS' PUSH RACER TF1

Junior's first car: suitable for children aged 1-4 years
European standard EN 71 for kids' toys approved
Product safety confirmed by TÜV Product Service GmbH
Low-noise tyres
Partly pre-assembled
Overall length: 78 cm
Made by Ferbedo in Germany

AM594-22



Team cap TF1
for kids, page 10



TEDDY BEAR WITH SUCTION CUP

For car decoration: medium size teddy in driver overall
Sponsor logos printed
Height: 18 cm

AM582-88

Logos fully
embroidered



TEDDY BEAR TF1

Cute high quality teddy in driver overall,
sponsor logos fully embroidered
Cap with Panasonic Toyota Racing logo printed
Height: 42 cm

AM582-87



TEDDY BEAR KEY RING

Teddy in driver overall
Sponsor logos printed
Height: 9 cm

AM582-89

Design will change without notice during the 2009 season.

MONOCOQUE SAFETY SYSTEM!



ALPINIA
EYEWEAR & HELMETS

HELMET TF1 'PROFESSIONAL' FOR KIDS

Protective IN-MOLD technology guarantees extremely robust helmet composition while being super light
Integrated monocoque framework distributes impact equally to the entire helmet structure
Product safety tested according to European standard CE EN 1078
UV-resistant, extra break-proof and scratch-resistant CERAMIC outer shell
Inner shell made from shock absorbing HI-EPS
Fully head size adjustable with a simple single-handed turning knob
Single-handed ERGOMATIC safety belt buckle
Airflow vents provide extra breathability and wearing comfort, additional insect protection with net inserts on the front

Size: 50-55 cm AM620-98



LIGHTWEIGHT HIGH TEC MATERIAL!



KIDS' RUNNER TF1

Make learning to ride fun!
Suitable for children aged 2-5 years: fully height adjustable saddle for kids of 87-120 cm size
Made of super light, high tech GFK polyamid (weight: 3,7 kg only)
Precise drum brake for safety stop, steering angle safety system
Ergonomic saddle, safety hand protection handles
Product safety tested according to DIN EN-71 toy norm by TÜV Product Service GmbH
Profiled 12,5" ball bearing wheels with pneumatic tyres suitable for all surfaces
Inclusive self-adhesive sticker set
Height: 54 cm, length: 84 cm, width: 38 cm
Made in Germany

AM621-09



Team T-Shirt 'Classic'
for kids, page 7

Design will change without notice during the 2009 season.



MODEL CAR

1:18 scale
Made by Minichamps

- Race die cast car TF106
Jarno Trulli AM595-58
- Race die cast car TF106
Ralf Schumacher AM595-57



MODEL CAR

1:43 scale
Made by Minichamps

- Race die cast car TF108
Jarno Trulli AM611-51
- Race die cast car TF108
Timo Glock AM611-52



PULLBACK CAR

1:64 scale
Made by Minichamps

- Not driver specific AM582-99

REPLICA STEERING WHEEL

Full size, authentic replica with working buttons, switches and paddles
Authentic carbon composite construction with rubber grips
On a leather base with an acrylic cover
Made by Amalgam

AM571-02



Working buttons and switches

Authentic carbon composite construction



Working paddles



TRUCK MODEL

- 1:43 scale Made by Eligor AM583-15
- 1:87 scale Made by Schuco AM582-86



JIGSAW PUZZLE TF1

100 piece jigsaw puzzle, 49 x 36 cm
Suitable for children aged 6+
Packed in printed cardboard box

AM610-59

MODEL CAR CONSTRUCTION KIT

Scale 1:33
Educational toy, made of wood
Patented joining system for self assembly (16 parts)
Including stickers
Suitable for children aged 3+ years
European standard EN 71 for kids toys approved

AM601-19



Made of wood



PREMIUM LINE

PICTURE PERFECT!

WE DON'T COMPROMISE ON POWER. YOU DON'T COMPROMISE ON QUALITY.
THE 2009 PREMIUM LINE GIVES YOU THE EDGE OVER THE COMPETITION.

LOCATION: ENGINE TEST BENCH AT THE TOYOTA F1 FACTORY IN COLOGNE/GERMANY

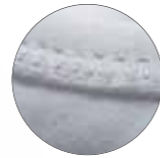


LADIES TOP WITH CHROME PRINT

Fitted sleeveless shirt with fashionable printed chrome TF1 car silhouette
 Seams stitched with silver yarn
 Woven badge with silicone print TF1 logo on the front
 Made from stretchy 92 % cotton / 8 % elasthane fabric, retains lasting shape

Available sizes:

- XS: AM611-12
- S: AM611-13
- M: AM611-14
- L: AM611-15
- XL: AM611-16



TF1 logo embroidered TOYOTA



LADIES TOP TF1

Figure accentuating sleeveless ladies shirt with coloured piping
 TF1 logo embroidered at the back
 TF1 silicone label at the hem
 Fabric: 96 % cotton / 4 % elasthane

Available sizes:

- XS: AMS94-84
- S: AMS94-85
- M: AMS94-86
- L: AMS94-87

While stock lasts



POLOSHIRT TF1

Easy to mix and match!
 Made from innovative mercerised cotton, with a sheen fabric finish
 Short side slits backed with contrasting bands
 Quilted back yoke, contrast piping on shoulders
 Woven badge with silicone print TF1 logo on the front
 Fabric: 100 % cotton piqué

Available sizes:

White:

- S: AM610-90
- M: AM610-91
- L: AM610-92
- XL: AM610-93
- XXL: AM610-94

Red:

- S: AM611-44
- M: AM611-45
- L: AM611-46
- XL: AM611-47
- XXL: AM611-48



MERCERISED COTTON!





SOFT TOUCH FABRIC!

SOFT TOUCH POLOSHIRT TF1

Simply fashionable:
 Form fitting soft touch fabric
 Knitted hems with coloured stripes
 Woven badge with silicone print TF1 logo on the front
 Fabric: 95 % viscose / 5 % elasthane

Available sizes:

- XS: AM611-07
- S: AM611-08
- M: AM611-09
- L: AM611-10
- XL: AM611-11



LANYARD WITH TF1 METAL BUCKLE

Removable end with metal carabiner and ring
 Special metal clip with embossed TF1 logo
 Multi colour, soft double layer strap with TF1 logo badge
 Strap length: 80 cm
 AM611-29



MESH PANELS!

CAP TF1 WITH MESH INSERTS

Trendy accessory with mesh panels on both sides, sandwich peak
 Woven TF1 logo badge on the front
 Cotton lining with TF1 logo printed seam tape
 For one size (58 cm), adjustable by a metal clip embossed with TF1 logo
 Fabric: 100 % cotton, mesh inserts: 100 % polyester

- White: AM611-18
- Grey: AM611-19



Metal clip embossed with TF1 logo



CAP TF1

Sporty grey double stripes on the shield
 Woven badge with silicone print TF1 logo badge on front and back
 Cotton lining with TF1 logo printed seam tape
 For one size (58 cm), adjustable by a metal clip embossed with TF1 logo
 Fabric: 100 % cotton

- Anthracite: AM611-17



Metal clip embossed with TF1 logo

SANDWICH PEAK!



**PROTECTIVE
FOAM
RUBBER!**

LAPTOP SLEEVE TF1

Stretchable, suitable for notebooks up to 15,4"
Can be used as a stand-alone case or placed inside another bag
Woven badge with silicone print TF1 logo on the front
Reversed heavy-duty Toyota F1 nose zipper puller
Fabric: protective synthetic foam rubber

AM611-28



**OPENS AND CLOSES
AUTOMATICALLY!**

AUTO-TELESCOPIC UMBRELLA TF1

Easy to handle: opens and closes automatically at the push of a button
Lightweight chrome plated shaft and rubber coated handle
TF1 logo print in silver grey on two panels and closure
Including nylon cover with TF1 logo print in black
Fabric: 100 % nylon

AM611-20



Scarf TF1, page 57

SILK TIE TF1

Elegant monochrome tie with diagonal stripes in various textures
Woven TF1 logo
Fabric: 100 % silk

Red: AM611-00

Anthracite: AM611-01



Woven TF1 logo

**100%
SILK!**

BUSINESS SHIRT TF1

High quality soft touch fabric
Modern collar, reinforced with corner stays
Slim fit cut for sizes S-L, regular fit for sizes XL-XXL
Panasonic Toyota Racing logo embroidered on the chest
Fabric: 100 % cotton with wrinkle-free finish

Available sizes:

S: AM621-16

M: AM621-17

L: AM621-18

XL: AM621-19

XXL: AM621-20



LEATHER BELT WITH TF1 NOSE BUCKLE

Premium calf leather belt with TF1 logo mark on the Toyota F1 nose metal buckle
TF1 logo embossed on the leather strip
Length: 110 cm (adjustable), width: 35 mm

AM611-21

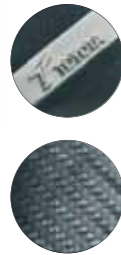




PEN TF1

Unique design with compressible, TF1 brake-hose style body
TF1 logo branding on the clip

AM611-27



LEATHER WALLET

Made from full grain, solid-coloured calf leather
Removable coin and credit card section
Carbon design lining
TF1 logo embossed
Size: 13 x 10,5 cm

AM611-26



**3
IN
1!**



LEATHER CARD HOLDER WITH MONEY CLIP

Made from full grain, solid-coloured calf leather
With TF1 logo branded clip for bank notes and
additional credit card section
Carbon design features
Size: 9 x 7 cm

AM611-33



LEATHER KEY RING

Made from full grain, solid-coloured calf leather
Leather loop can be worn on a belt
Rotating key ring
TF1 logo embossed

AM611-25



SUN GLASSES TF1 WITH ACETATE FRAME

Urban chic: 2-layer acetate frame (colour: black/clear), hand tooled
Metal logo plate with TF1 logo engraved in temple tips
Impact resistant CR39 lenses (colour: smoke), 100 % UV protection,
Filter class 3, inclusive protective EVA casing and microfibre cleaning
towel with TF1 logo print

AM610-57



TF1 logo
engraved



Filter class 3

**2-LAYER ACETATE
FRAME!**

SUN GLASSES TF1 WITH STAINLESS STEEL FRAME

Racy design: lightweight, silver matt stainless steel frame with louvred sides
Toyota F1 Logo engraved on the frame
Impact resistant polycarbonate lenses (colour: smoke),
100 % UV protection, filter class 3
Inclusive protective EVA casing and microfibre cleaning towel with TF1 logo print

AM610-56



Stylised F1
aero louvres



TF1 logo
engraved



**LIGHT
WEIGHT!**



BUSINESS CARD CASE

Brushed metal case for business cards
Internal clips to conveniently hold different types of cards in two separate compartments
TF1 logo engraved
Size: 10 x 6 cm

AM611-37

2-CLIP SYSTEM!



KEYRING TF1 PISTON

One for the engineers:
Authentic 3 - dimensional TF1 piston with flexible con-rod
Panasonic Toyota Racing logo
Length: 55 mm

AM621-06

FRONT WING KEY RING

Authentic 3-dimensional TF1 nose and front wing
Embossed TF1 logo
Width: 50 mm

AM611-31



STEERING WHEEL KEY RING

Authentic 3-dimensional Toyota F1 car steering wheel
Panasonic Toyota Racing logo engraved on the back
Width: 35 mm

AM611-30



STAINLESS STEEL COFFEE MUG

Stylish double base coffee mug, made of lightweight stainless steel
Etched with Toyota F1 logo
Capacity: 0,4 l

AM611-32

CHRONOGRAPH 'AERODYNAMIC'

Limited edition chronograph with unique aerodynamic TF1 nose style design and engraved serial number
High quality Citizen movement OS20, brushed solid stainless steel case
Genuine leather strap, butterfly buckle with edged TF1 logo
Waterproof 5 ATM

AM611-22



F1 nose style



Butterfly buckle



Stainless steel

CITIZEN MOVEMENT!

WATCH OUT!

CHRONOGRAPH LCD

Multifunctional digital world-time chronograph:
Lap memory, split functions, dual time, countdown timer etc.
Brushed alloy case with engraved TF1 logo
Background illumination, waterproof 3 ATM

AM611-24



LAP MEMORY!



Logo and car engraved

ZIPPO LIGHTER

Premium silver chrome stainless steel
Engraved TF1 car silhouette and TF1 logo
Refillable

AM610-55





CHRONOGRAPH AERO II - BLACK LIMITED

Timing is crucial in Formula One - Have perfect timing with this chronograph, strictly limited to 2000 pieces
Aerodynamic Toyota F1 nose style
Serial number engraved on buttons
High quality Citizen movement OS20
Ionic platinised black watchcase with non-reflecting glass,
waterproof 10 ATM
Special precast PU wristband with diver buckle

AM621-15

**AUTHENTIC TF1 NOSE STYLE!
-STRICTLY LIMITED-**



LADIES WATCH TF1

Feel the glamour of Formula One!
Bezel decorated with Zirconium cubes
Limited edition with engraved serial number
High quality Citizen movement, multifunctional display
Stainless steel case (diameter 40 mm), waterproof 10 ATM
Genuine leather strap in crocodile design, dual colour: white on the outside, red on the inside with embossed TF1 logo

AM621-04

**GENUINE LEATHER STRAP &
ZIRCONIUM CUBES!**



**CITIZEN
MOVEMENT!**

Solid stainless steel case

CHRONOGRAPH 'PERFORMANCE'

Limited edition sports chronograph
Toyota F1 design with engraved serial number
High quality Citizen movement OS20, solid stainless steel case
Non-reflecting glass
Stainless steel bracelet with ionic platinised black middle links
TF1 logo edged on clasp and case
Waterproof 10 ATM

AM611-23

*Stainless steel bracelet
with IP-black middle links*

Non-reflecting glass





**WIND
PROOF!**

PREMIUM JACKET TF1

Water repellent and wind proof jacket with hood
 Finished in robust nylon with 'rip-stop' texture
 Ventilation system at back, reflective piping
 Two front pockets, two inner pockets, Toyota F1 nose zipper puller
 Woven badge with silicone print TF1 logo on the back
 Fabric: 100 % polyester, mesh lining with TF1 logo print

Available sizes:

- S: AM610-60
- M: AM610-61
- L: AM610-62
- XL: AM610-63
- XXL: AM610-64



Ventilation system



POLOSHIRT TF1

Made from innovative mercerised cotton, with a sheen fabric finish
 Stylish double stripes on the front
 Short side slits backed with contrasting bands
 Woven badge with silicone print TF1 logo on the front
 Fabric: 95 % cotton / 5 % elasthane

Available sizes:

Grey:

- S: AM610-80
- M: AM610-81
- L: AM610-82
- XL: AM610-83
- XXL: AM610-84

Anthracite:

- S: AM610-85
- M: AM610-86
- L: AM610-87
- XL: AM610-88
- XXL: AM610-89



**MERCERISED
COTTON!**



LADIES BLOUSE TF1

Elegant fitted blouse with 3/4 sleeves, can be worn full length with the cuff showing or folded right up
TF1 logo embroidered discreetly on the chest
Fabric: stretchy 95 % cotton / 5 % elasthane

Available sizes:

- XS: AM582-35
- S: AM582-36
- M: AM582-37
- L: AM582-38
- XL: AM582-39



While stock lasts

FOR LADIES!

FITTED MEN'S SHIRT TF1

Classical style shirt with short sleeves
TF1 logo embroidered discreetly on the sleeve
Fabric: 100 % cotton

Available sizes:

- S: AM582-30
- M: AM582-31
- L: AM582-32
- XL: AM582-33



While stock lasts



FITTED STYLE!

MEN'S SHIRT TF1

For business and leisure: fitted shirt with super fine pin stripes
Woven badge with silicone print TF1 logo on the back
Fabric: 100 % cotton

Available sizes:

- S: AM610-75
- M: AM610-76
- L: AM610-77
- XL: AM610-78
- XXL: AM610-79





LONGSLEEVE SHIRT TF1 WITH CHROME PRINT

Fashionable printed chrome Toyota F1 car silhouette
 Perfect fit - provides great freedom of movement
 Shoulder and sleeve inserts with contrasting colour seams
 Woven badge with silicone print TF1 logo on the front
 Fabric: 95 % cotton / 5 % elasthane

Available sizes:

- S: AM610-95
- M: AM610-96
- L: AM610-97
- XL: AM610-98
- XXL: AM610-99



SOFT SHELL!

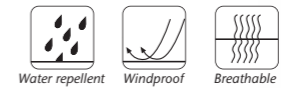
SOFTSHELL JACKET TF1

Fitted, functional softshell jacket: water repellent, windproof and breathable for supreme wearing comfort
 With pre-shaped elbows, 3 front pockets
 Waterproof zippers, Toyota F1 nose zipper pullers
 Quilted back yoke, ventilation system on the shoulders
 Woven badge with silicone print TF1 logo on the back
 Fabric: stretchy 91% softshell polyester, 9 % elasthane

Available sizes:

- S: AM610-65
- M: AM610-66
- L: AM610-67
- XL: AM610-68
- XXL: AM610-69

Quilted back yoke





CARDIGAN TF1

Comfortably soft and warm knitted cardigan with hood
 Zipper pocket on sleeve
 Toyota F1 nose zipper pullers
 Woven badge with silicone print TF1 logo on the back
 Fabric: 55 % acrylic, 45 % cotton

Available sizes:

S:	AM610-70
M:	AM610-71
L:	AM610-72
XL:	AM610-73
XXL:	AM610-74



SCARF TF1

Cuddly soft knitted scarf, pleasant against the skin
 Woven Panasonic Toyota Racing logo label
 Metal badge with embossed TF1 car silhouette
 Size: 170 cm x 25 cm
 Fabric: 70 % polyacrylics / 30 % cotton

AM620-82

HAT TF1

Styled for comfort: stretchy knitted hat
 Soft heat insulating fleece lining in a contrasting colour
 Woven Panasonic Toyota Racing label inside
 Metal badge with embossed TF1 car silhouette
 Outer fabric: 70 % polyacrylics / 30 % cotton
 Inner fabric: 100 % polyester fleece
 One size fits all

AM620-81



SOFT TOUCH LONGSLEEVE TF1 WITH HOOD

Stylish and comfortable:
 Form fitting soft touch fabric, provides great freedom of movement
 With hood and shawl collar with extra button and loop
 Woven badge with silicone print TF1 logo on the front
 Fabric: 95 % viscose / 5 % elasthane

Available sizes:

- XS: AM611-02
- S: AM611-03
- M: AM611-04
- L: AM611-05
- XL: AM611-06



SOFT TOUCH FABRIC!

PASSION FOR QUALITY AND BEYOND ...

PRODUCT TECHNOLOGY GUIDE

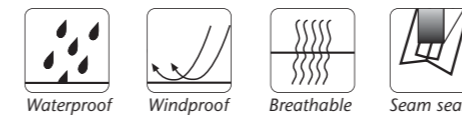
CHIEMSEE

Chiemsee – renowned for its off-the-wall products for extreme sports – is the new partner of the Panasonic Toyota Racing team. Combining industry-leading materials and designs with the passion of Formula 1, the genuine Toyota F1 team wear and many of the sports & lifestyle products ensure maximum performance and comfort.



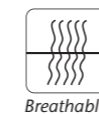
Lintex™

- 3-layer functional material with sealed seams
- Combined with outstanding breathability to keep you warm and dry
- Guaranteed 100 % wind- and waterproof



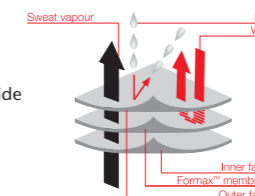
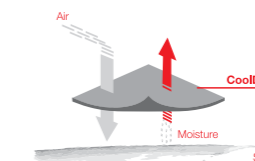
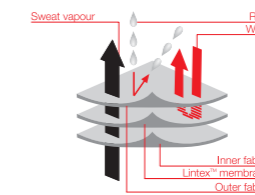
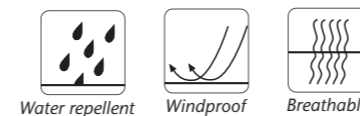
CoolDry™

- Combines the comfort of cotton and the quick dry-performance of polyester
- Maximises moisture transmission away from the skin to the outer surface
- Cool and comfortable at the same time



Formax™ softshell

- Optimum weather protection with maximum comfort for everyday use
- Membrane protection against wind and rain on the outside
- Breathable and stretchy micro-fleece on the inside

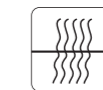


Micro fleece

- Countless micro fibres build up heat-insulating air cushions
- Soft and comfortable
- Warming effect of wool at a fraction of the weight

Interlock (bonded with Micro fleece)

- Double face circular knitted fabric
- High flexibility, warmth and comfort
- Breathable interlock on the outside
- Heat-insulating bonded Micro fleece on the inside



Breathable

Mercerisation

- An advanced textile finishing technology
- Enhances shine, flexibility and durability of cotton yarn

Soft touch viscose

- Fine-knit blended viscose (based on cellulosic fibres)
- Super light fabric
- Exceptionally soft and silky touch gives a fashionable and comfortable look

Wrinkle-free finish

- A special textile treatment reduces wrinkles resulting from washing
- Hassle-free ironing



TOYOTA MOTORSPORT GMBH

Toyota Allee 7
50858 Cologne, Germany

T +49 (0)2234 1823 0
F +49 (0)2234 1823 387

www.toyota-f1-shop.com
www.toyota-f1.com